



MXY-1306



## Precise Temp. Control

No-load:  $\pm 1.0^{\circ}\text{C}$  | Loaded:  $\leq 3^{\circ}\text{C}$  Uniformity &  $\leq 2.5^{\circ}\text{C}$  Fluctuation.



## Multiple Alarms

Complete Sound and Light Alarm System for High/Low Temperatures, Power Outages, Door Opening, Sensor Failures, and Low Battery Power.



## Energy-Saving & Low Noise

3kW\*h/24h Power Consumption & 35dB Low Noise.

## Structure Features

### LED Interior Lighting

The cabinet comes equipped with LED interior lighting and independent external light switches for easy access and visibility.

### LED Display

Midea's unique dual display technology shows both temperature and humidity inside the unit.

### USB Port

With a USB data recorder, you can easily record and analyze data.



**Wire Shelves**  
Opt:Stainless Steel Sliding Drawer

### Top Cooling

Top Cooling technology boosts temperature variation performance and increases cooling efficiency, ensuring reliable and energy-efficient operation.

### Over 45-degree hovering function

Over 45-degree hovering function provides easy access to blood bag.

### Application, Rating, & Electrical Data

Application	Blood Bank Refrigerator
Storage Volume (L/Cu.Ft)	1306/46.12
Temperature Range	2°C - 6°C
Default Set Point	4°C
Power	220-240-V /50/60Hz
Current	4.7A
Power Cord Length	1.7m
Certification	CE
Door type	Foamed glass door
Application Environment	Non-corrosive, non-flammable, non-explosive
Ambient Operating Temperature	16°C-32°C

### Refrigeration

Refrigeration System	Forced-air/hydrocarbon Refrigerant
Compressor	Hermetic, variable speed
Condenser Type	Air cooling
Expansion Device	Capillary tube
Evaporator Type	Fin type
Defrost Method	Automatic
Refrigerant	R600a/52g*2

### Controller / Configuration Settings

Display screen	LED Temp & RH Display
Controller Type	Microprocessor
Security	Lockable door, password protected settings
Control Sensor	NTC, stainless steel
Communication Ports	USB, Remote alarm contacts
Power Failure Alarm	Yes
High/Low Alarms	Yes, fully adjustable
Door Ajar Alarm	Yes
Download	Yes, via USB, PDF
Temperature Log	Yes, download via USB
Battery Back-up	Yes, 40h
Protection	Antifreeze Protection

### Performance Characteristics (normal operating conditions)

Uniformity   (°C)	No-load: ±1.0   Loaded: ≤3
Recovery to 6°C after 1 min door opening   (min)	100
Energy consumption   (kWh/day)	3
Noise emission   (dB)	35
Heat rejection   (BTU/hr)	640
Pull-down time to 6°C   (min)	15

### Typical Temperature Map

	test 1	test 2	test 3	test 4	test 5	test 6	test 7	test 8	test 9
Avg	5.35	5.68	5.49	5.70	5.37	4.59	4.58	5.42	5.48
Max	6.10	6.60	6.90	6.50	6.20	5.30	5.40	6.00	6.10
Min	4.60	4.90	4.40	4.90	4.60	4.00	3.90	5.00	5.00

Midea Biomedical, Trademarks are the property of their respective owners. Drawings are not for engineering use, and specifications may change. Not all products are available in all countries, so please check with your local sales representative for details.

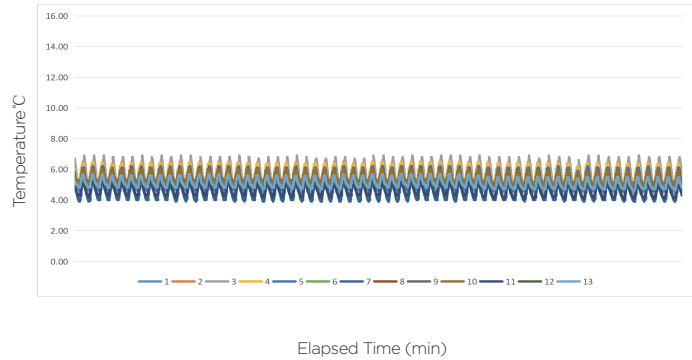


### Dimensions and Construction

Interior (w*d*h)	1410*630*1540 mm
Exterior (w*d*h)	1500*895*1925 mm
Access Port	1 Access Port- for external monitoring probe(s) (25 mm diameter)
400ml Blood Bag	672
Wheels	5 Swivel Casters + 2 Leveling Feet
Net/Gross Weight	260/311 kg
INT/EXT Material	304SS/Pre-coated Metal Steel Sheet

All performance data from 1306L Blood Bank Refrigerator, 25 ambient, 4°C

### Uniformity



### Cooling Speed

