

MXY-206



Precise Temp. Control

$\pm 1^{\circ}\text{C}$ Uniformity & $\leq 2.5^{\circ}\text{C}$ Fluctuation.



Multiple Alarms

Complete Sound and Light Alarm System for High/Low Temperatures, Power Outages, Door Opening, Sensor Failures, and Low Battery Power.



Energy-Saving & Low Noise

1.5kW*h/24h Power Consumption & 35dB Low Noise.

Structure Features

LED Interior Lighting

The cabinet comes equipped with LED interior lighting and independent external light switches for easy access and visibility.

LED Display

Midea's unique dual display technology shows both temperature and humidity inside the unit.

USB Port

With a USB data recorder, you can easily record and analyze data.

Top Cooling

Top Cooling technology boosts temperature variation performance and increases cooling efficiency, ensuring reliable and energy-efficient operation.

Wire Shelves

High quality alloy construction delivers unmatched strength-to-weight ratio. Corrosion-resistant reinforced, 30% lighter than conventional steel shelving.

Over 15-degree hovering function

Over 15-degree hovering function provides easy access to blood bag.



Application, Rating, & Electrical Data

Application	Blood Bank Refrigerator
Storage Volume (L/Cu.Ft)	206/7.27
Temperature Range	2°C - 6°C
Default Set Point	4°C
Power	100-240-V /50/60Hz
Current	1.5A at 240V/3A at 100V
Power Cord Length	1.7m
Certification	CE
Door type	Foamed glass door
Application Environment	Non-corrosive, non-flammable, non-explosive
Ambient Operating Temperature	16°C-32°C

Refrigeration

Refrigeration System	Forced-air/hydrocarbon Refrigerant
Compressor	Hermetic, variable speed
Condenser Type	Air cooling
Expansion Device	Capillary tube
Evaporator Type	Fin type
Defrost Method	Automatic
Refrigerant	R600a/40g

Controller / Configuration Settings

Display screen	LED Temp & RH Display
Controller Type	Microprocessor
Security	Lockable door, password protected settings
Control Sensor	NTC, stainless steel
Communication Ports	USB, Remote alarm contacts
Power Failure Alarm	Yes
High/Low Alarms	Yes, fully adjustable
Door Ajar Alarm	Yes
Download	Yes, via USB, PDF
Temperature Log	Yes, download via USB
Battery Back-up	Yes, 40h
Protection	Antifreeze Protection

Performance Characteristics (normal operating conditions)

Uniformity (°C)	No-load: ±1.0 Loaded: ≤3
Recovery to 6°C after 1 min door opening (min)	105
Energy consumption (kWh/day)	1.5
Noise emission (dB)	35
Heat rejection (BTU/hr)	320
Pull-down time to 6°C (min)	15

Typical Temperature Map

	test 1	test 2	test 3	test 4	test 5	test 6	test 7	test 8	test 9
Avg	5.35	5.68	5.49	5.70	5.37	4.59	4.58	5.42	5.48
Max	6.10	6.60	6.90	6.50	6.20	5.30	5.40	6.00	6.10
Min	4.60	4.90	4.40	4.90	4.60	4.00	3.90	5.00	5.00

Midea Biomedical, Trademarks are the property of their respective owners. Drawings are not for engineering use, and specifications may change. Not all products are available in all countries, so please check with your local sales representative for details.

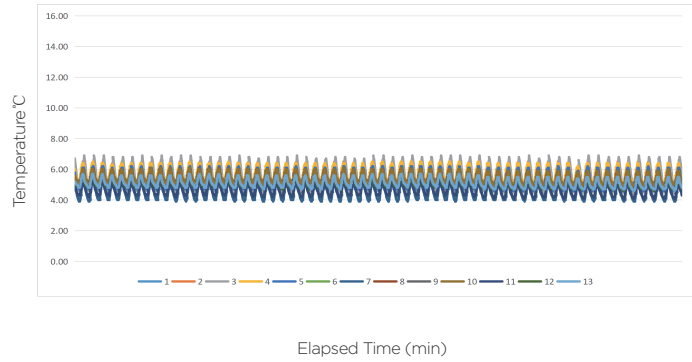


Dimensions and Construction

Interior (w*d*h)	505*435*1160 mm
Exterior (w*d*h)	600*590*1460 mm
Access Port	1 Access Port- for external monitoring probe(s) (25 mm diameter)
400ml Blood Bag	152
Wheels	2 Swivel Casters + 2 Leveling Feet
Net/Gross Weight	80/86 kg
INT/EXT Material	Pre-coated Metal Steel Sheet/ 304SS

All performance data from 206L Blood Bank Refrigerator, 25 ambient, 4°C

Uniformity



Cooling Speed

